

# SAMPLE IMAGE

## MSX2500 TOMOGRAPHY

### Auto Judgment by MSX2500

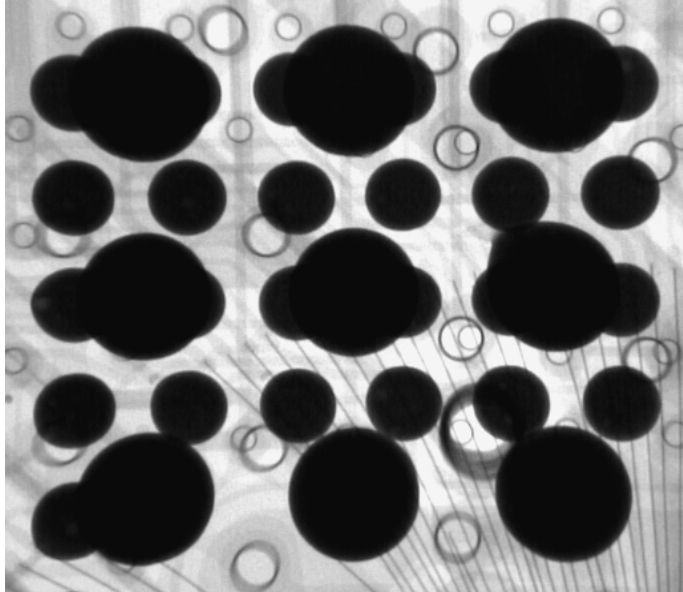
A: Area NG

B: Contrast NG

C: Position NG

- (1) BGA両面実装のボール(φ0.8)変形  
The board of double sided mount (0.8 mm ball)

透視撮影

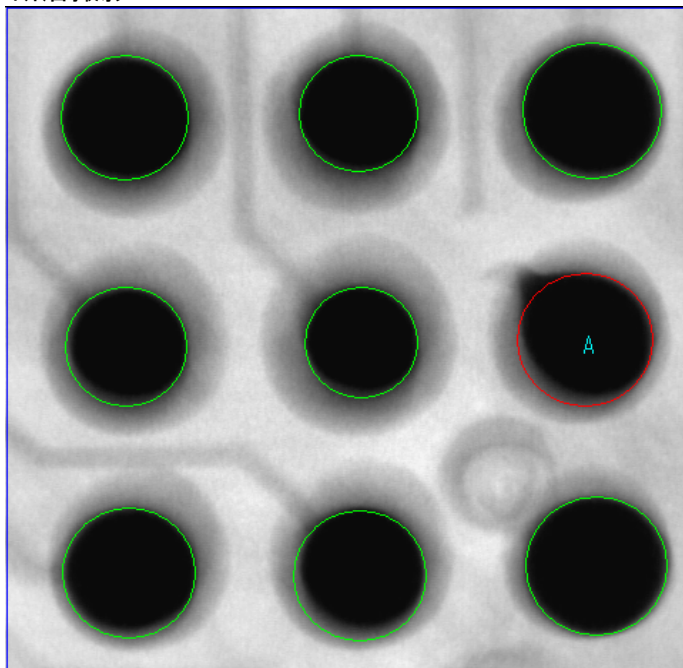


管電圧64kV 倍率40倍 64KV x40 magnify



断層撮影

Tomogram image

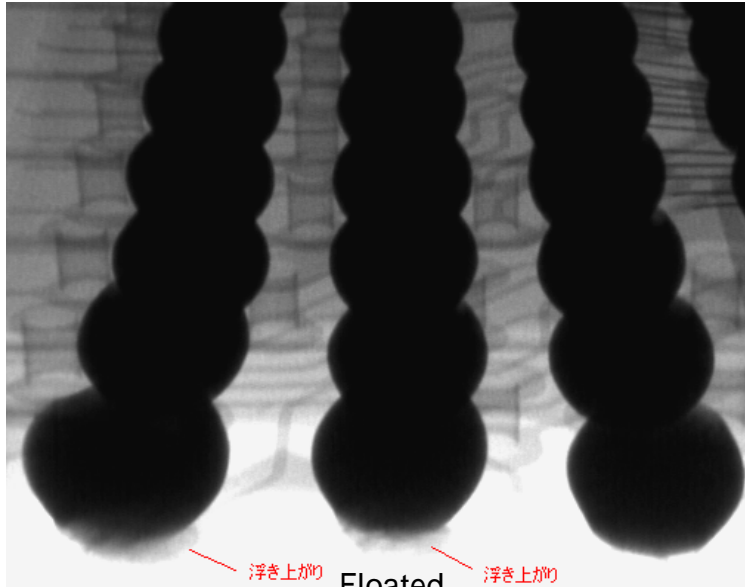


管電圧64kV 倍率40倍 64KV x40 magnify  
A部ボール変形 A: Modification Ball

(2) CSP( $\phi 0.5$ )の浮き上がり (オープン)      Floated ball (0.5 mm)

傾斜透視(60°)撮影

60° Angle Image

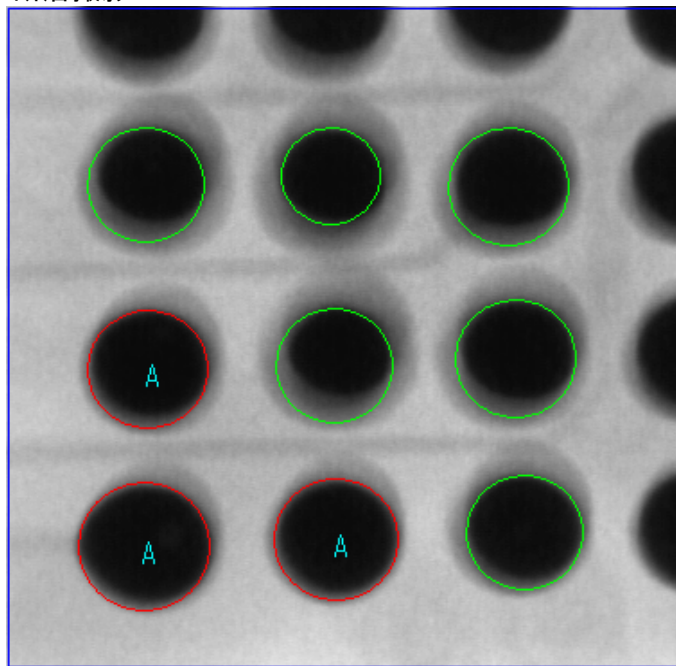


管電圧57kV      倍率75倍



断層撮影

75KV x75 Magnify



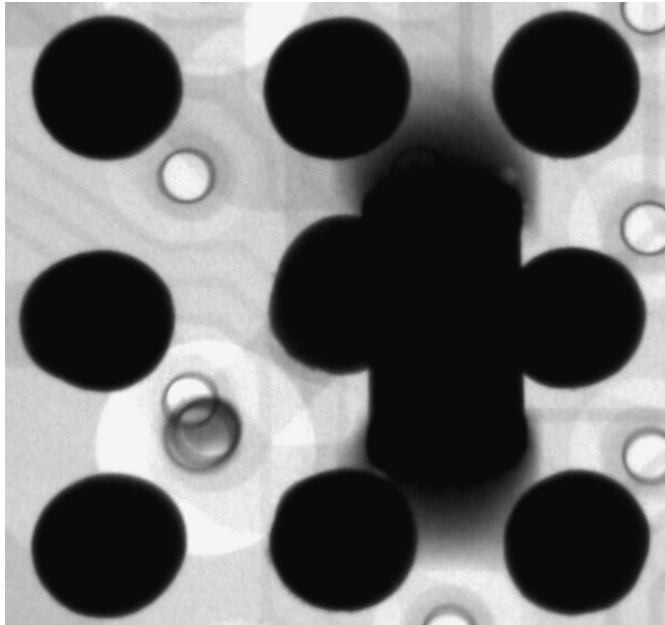
管電圧62kV      倍率40倍  
A部ボール浮き上がり

62KV x40 Magnify  
Positions A are floated ball

(3) BGAボールの位置ズレ

Position Error

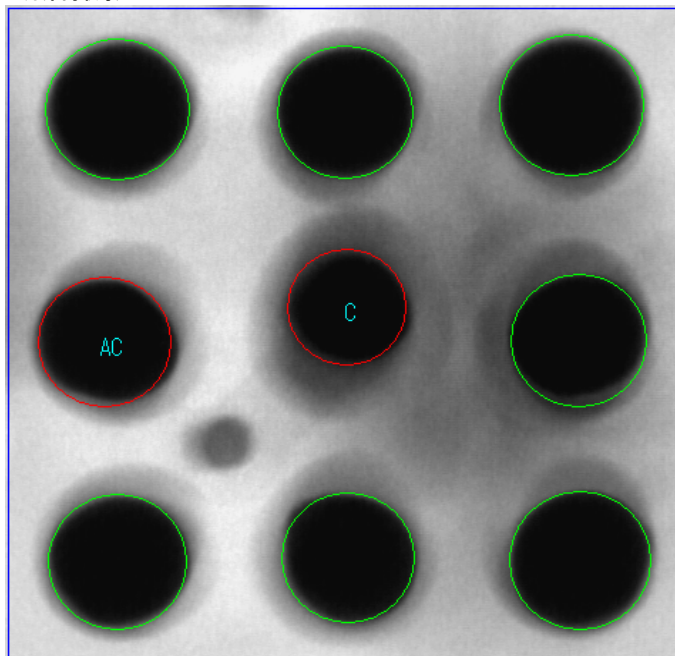
透視撮影



管電圧66kV 倍率55倍 66KV x55 magnify



断層撮影

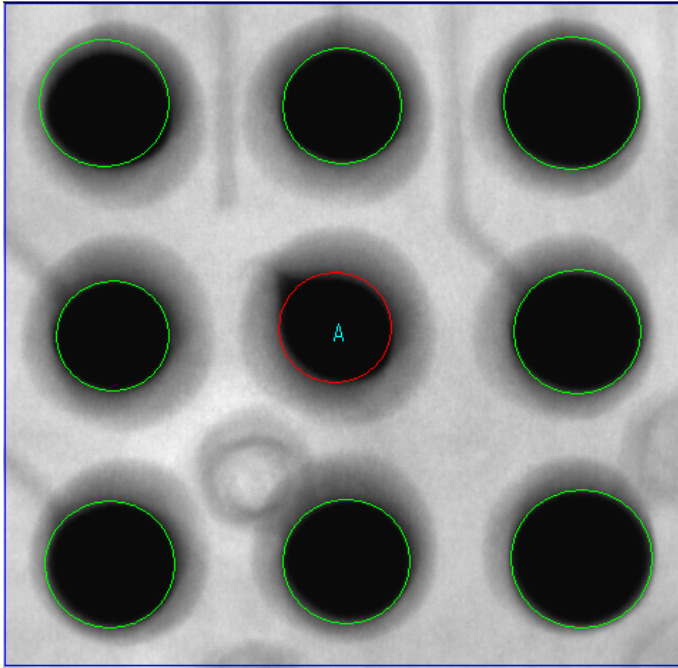


管電圧72kV 倍率40倍 72KV x40 magnify  
AC、C部ボールの位置ズレ

AC and C are position error

(4) BGAボールの変形 Form error of the ball

断層撮影

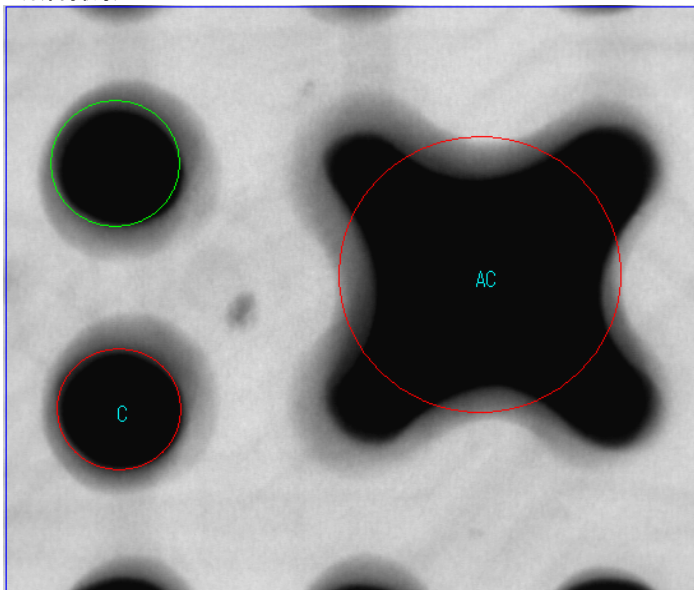


管電圧65kV 倍率40倍 65KV x40 magnify  
A部ボール変形 A image is form error

(5) BGAボールのブリッジ

Bridge

断層撮影



管電圧60kV 倍率40倍 60KV x40 magnify  
AC部ボールブリッジ Ball bridge at the AC